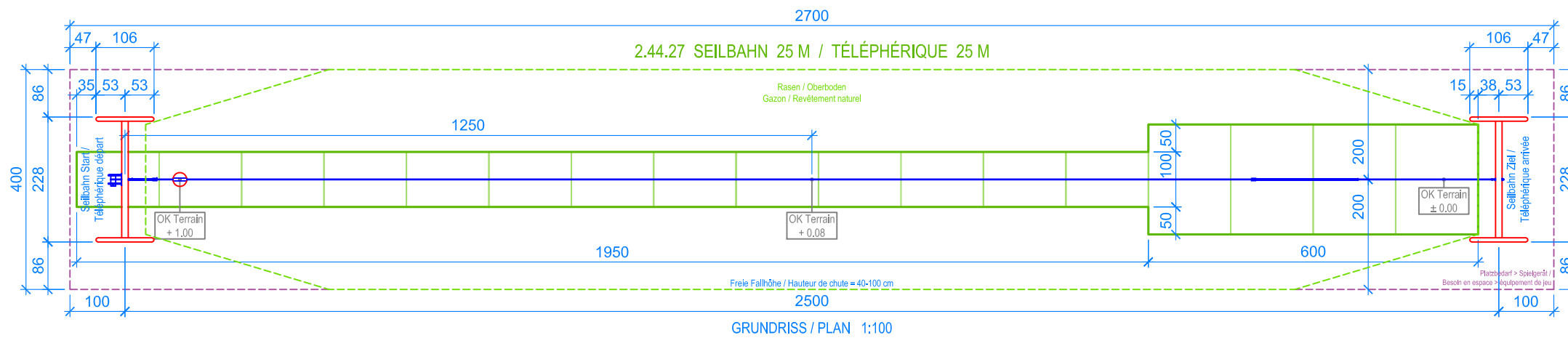


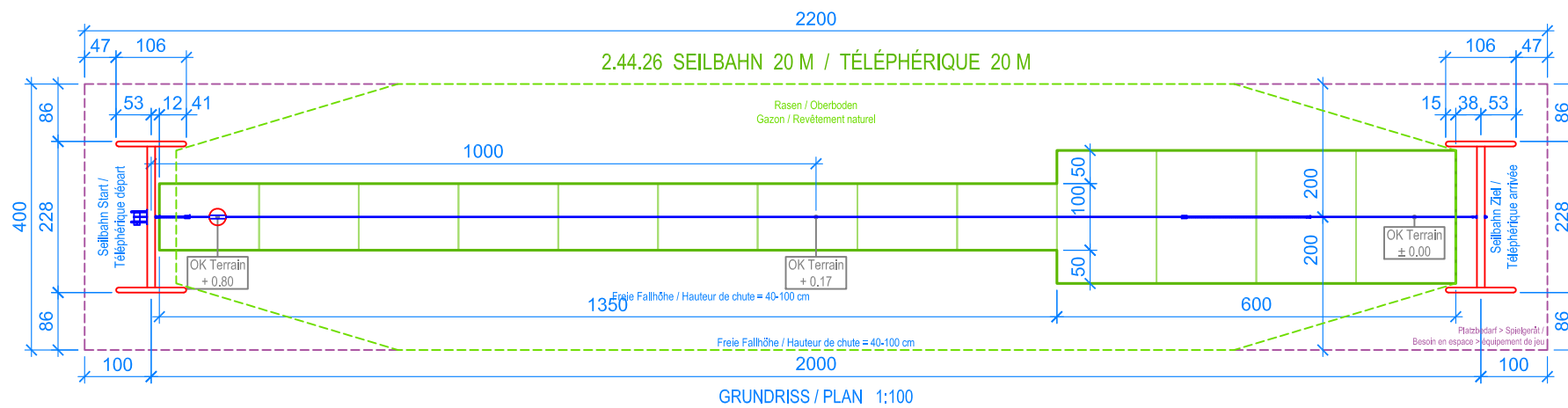
Fallschutzplatten / Dalles antichocs L= 30 m:

100 x 150 x 4.5 cm = 24 Stk. / pces



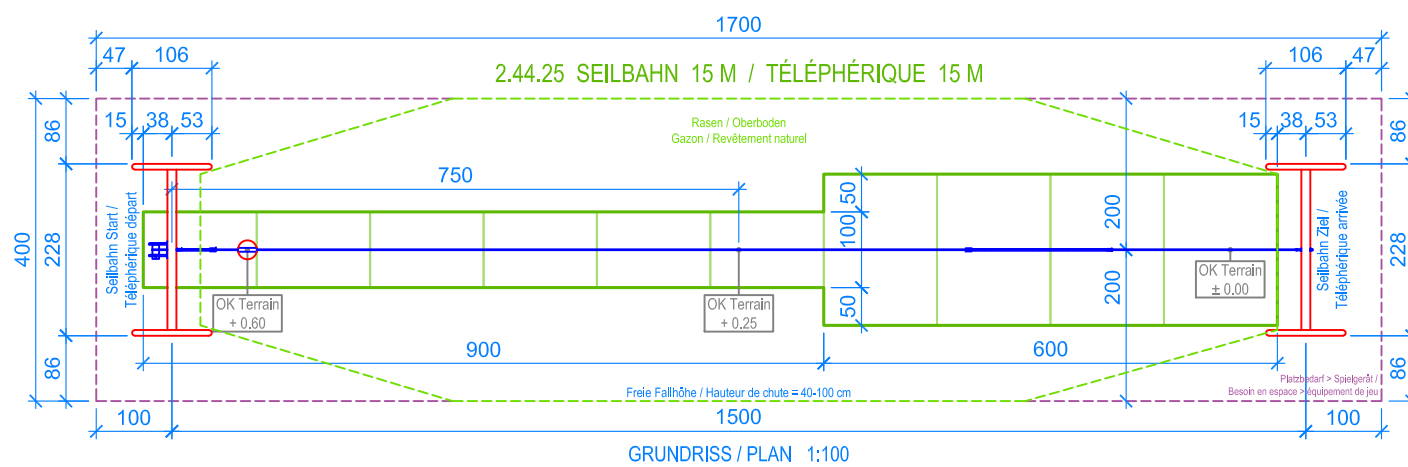
Fallschutzplatten / Dalles antichocs L= 25 m:

100 x 150 x 4.5 cm = 21 Stk. / pces



Fallschutzplatten / Dalles antichocs L= 20 m:

100 x 150 x 4.5 cm = 17 Stk. / pces



Fallschutzplatten / Dalles antichocs L= 15 m:

100 x 150 x 4.5 cm = 14 Stk. / pces

- Aussenkante Fallschutzplatten
- Limite minimale avec dalles antichocs
- - - Fallraum
- - - Espace de chute